

Using the 'Public Facing' Contracts Register

1. The public facing contracts register contains a summary of key contractual information for the ICU's contracts. The public facing contracts register is a 'live' document and the links from the source document, the 'master contracts register', are updated on at least a monthly basis. Please note contracts are only entered onto the register when a contract/variation/other contract action is signed or sealed by both contractual parties.
2. Please note Framework Agreements are entered as one line. Contact the relevant Contracts
3. If you have any queries about a contract please contact the Contracts Officer assigned to the
4. Column Headers:

Contract Reference: Each contract that has been actioned through the ICU Contracts Team has a unique reference identifier. Please refer to this identifier when corresponding with us on a specific

Contract Title: This is the title of the service as detailed in the contract.

Service Provider: This is the contractual name of the organisation that the Council or CCG has the contract with.

ICU Programme: This confirms the relevant ICU Programme that the contract is associated with.

ICU Project: This confirms the specific ICU Project that the contract is associated with.

Commissioning Lead: This is the person who we think has responsibility for this contract and in the Contracts Team in relation to any contracts work required on this contract.

Contracts Lead: This is the name of the Contracts Officer who is responsible for carrying out contract

Contracting Organisation (SCC or CCG): As this register is for both the Council (SCC) and the CCG, we

Contract Start Date: The date the contract commenced.

Current Contract Expiry Date: The date the contract will currently expire.

Maximum Expiry Date: The date we are able to extend the contract to if we wish.

Agreement Type: This column indicates whether the contract is a block contract,

Total Annual value 2019/20: The amount of expenditure/income associated with the contract.

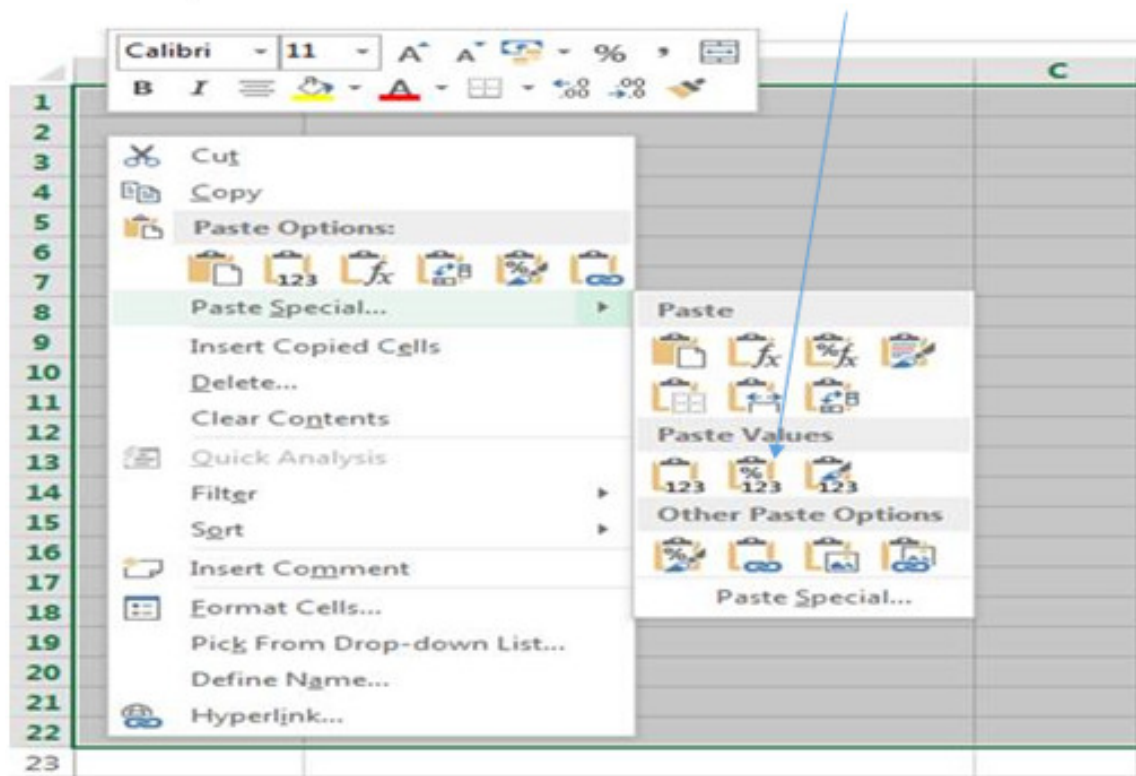
Monitoring Frequency: This is the frequency stated in the contract which monitoring should

Contract Notice Period for termination: This is the minimum amount of notice we can give an

Please do not attempt to change the password or 'save as' this document.

Following feedback regarding issues with the Public Register when extracting summaries, copying and pasting etc, we are hopeful we have solved the problem. If you wish to copy sections of information from the register and paste into a new spreadsheet, please do the following:

- Select the data you wish to copy
- Right click 'copy'
- Open a new spreadsheet
- Right click 'paste' then 'paste special' then select the option arrowed below. (If you can't see the picture below it's the icon in the centre of the row under 'Paste Values' and contains '%123')



Contract Reference EC/MW	Contract Title	Service Provider	ICU Programme	ICU Project	Commissioning Lead	Contracts Lead	Contracting Organisation	Contract Start Date	Current Contract Expiry Date	Maximum Expiry Date	Agreement Type	Total Annual value 2019/20	Monitoring Frequency	Contract Notice Period for termination
N/A	NHS Health Checks LCS	34 GP Practices	Prevention & Early Intervention	Business as usual	Charlotte Matthews	Ireen Kagwa	SCC	01/04/15	31/03/20	N/A	LCS	£125,000.00	quarterly	3 months
EC09/01/09 89	Northlands House - Care Contract - Residential Home for Older People - 61 block beds + 1 respite bed	BUPA Care Homes (CFC Homes) Limited	Managing & Developing the Market	29: Home care implementation	Matthew Waters	Ireen Kagwa	SCC	24/06/05	23/06/30	23/06/30	Block Contract	£2,345,780.86	quarterly	N/A
EC909/01/1 101	Oak Lodge - Care Contract - Residential Home for People with OPMH - 38 block beds +2 respite beds	BUPA Care Homes (CFC Homes) Limited	Managing & Developing the Market	29: Home care implementation	Matthew Waters	Ireen Kagwa	SCC	08/02/10	07/02/35	07/02/35	Block Contract	£1,515,158.58	quarterly	N/A
SC4/15/488 9(f)	Oak Lodge - Lease for Care Home and Day Centre	BUPA Care Homes (CFC Homes) Limited	Managing & Developing the Market	29: Home care implementation	Matthew Waters	Ireen Kagwa	SCC	08/02/10	07/02/60	07/02/60	Block Contract	£28,297.32	quarterly	N/A
EC09/01/24 80	Mental Capacity Deputyship Service	Hampshire County Council	Business as Usual	5: Adult mental health	Not assigned	Karl Hooper	SCC	16/10/18	31/03/21	n/a	Block Contract	£53,000.00	N/A	6 months
EC09/01/19 87	Health and Social Care related Equipment Store	Millbrook Healthcare	Integration	2: Supporting appropriate timely discharge & out of hospital model	Jamie Schofield	Katerina Ploumakis	SCC	01/07/13	30/06/20	30/06/20	Block Contract	£1,589,000.00	monthly	1 month
60042856	Housing Support for Older People at Rose Brook Court	Saxon Weald Housing Association	Prevention & Early Intervention	3: Implementing the city's ageing model	Sandy Jerrim	Sadie Brackstone	SCC	01/04/17	31/03/20	31/03/20	Purchase Order	£6,288.73	quarterly	6 months
SC4/14/443 (b)	Brook Centre Lease	Saxon Weald Housing Association	Prevention & Early Intervention	3: Implementing the city's ageing model	Sandy Jerrim	Aleksandra Burlinson	SCC	01/09/08	31/08/23	31/08/23	Block Contract	£0.00	N/A	N/A
SC4/15/488 9(f)	Oak Lodge Facilities Management (day centre meals)	BUPA	Managing & Developing the Market	Business as usual	Matthew Waters	Ireen Kagwa	SCC	08/02/10	07/02/60	07/02/60	Block Contract	£20,530.92	N/A	N/A
EC09/01/25 63	School & College Health & Well-being Drop-in services and Sexual Health Support & Interventions Lot 2	No Limits (South)	Prevention & Early Intervention	20: Prevention and Early Help for Children and Families	Phil Lovegrove	Ireen Kagwa	SCC	01/09/18	30/09/22	30/09/22	Framework	£66,573.00	quarterly	3months
MW277	Older Persons Accommodation Based and Floating Support Service	Housing Support Services (SCC)	Prevention & Early Intervention	3: Implementing the city's ageing model	Sandy Jerrim	Sadie Brackstone	SCC	01/03/16	31/03/20	31/03/20	SLA	£806,000.00	quarterly	6 months
EC09/01/23 84	Family Group Conferences	Daybreak Family Group Conferences	Business as Usual	Business as usual	Tim Davis	Katerina Ploumakis	SCC	01/04/16	31/03/20	31/03/20	Block Contract	£48,560.00	quarterly	3 months
MW278	Integrated Mental Health Employment Support Service	Employment Support Team (SCC)	Integration	5: Adult mental health	Alison Boynton	Sadie Brackstone	SCC	01/04/17	31/03/20	31/03/22	SLA	£215,665.00	quarterly	4 months
EC09/01/26 18	Healthwatch Southampton	Southampton Voluntary Services	Managing & Developing the Market	Business as usual	Kirsten Killander	Karl Hooper	SCC	01/07/18	30/06/23	30/06/25	Block Contract	£178,890.96	quarterly	3 months
EC09/01/19 70(i)	Domestic Abuse & Sexual Violence (S256)	Southampton City Clinical Commissioning Group	Prevention & Early Intervention	Business as usual	Sandy Jerrim	Karl Hooper	SCC	01/11/15	31/03/21	31/03/21	Block Contract	£58,000.00	quarterly	3 months
400538446	Out of Hours Service	Hampshire County Council	Business as Usual	Business as usual	Sharon Stewart	Karl Hooper	SCC	01/04/18	31/03/19	31/03/19	Purchase Order	£101,930.00	quarterly	4 months
EC09/01/22 89	Integrated Advocacy Services	Solent MIND	Integration	5: Adult mental health	Colin McAllister	Sadie Brackstone	SCC	01/04/15	31/03/20	31/03/20	Block Contract	£296,895.00	quarterly	3 months
EC09/01/22 96A	Meals on Wheels	City Catering Southampton	Integration	3: Implementing the city's ageing model	Adrian Littlemore	Karl Hooper	SCC	01/04/15	31/07/19	00/01/00	Block Contract	£81,000.00	quarterly	3 months
EC09/01/23 64	Domestic Violence Service - Prevention & Early Intervention (Lot 1)	Yellow Door	Prevention & Early Intervention	Business as usual	Sandy Jerrim	Karl Hooper	SCC	01/11/15	31/03/21	31/03/21	Block Contract	£372,000.00	quarterly	3 months
EC09/01/23 64	Domestic Violence Service - Refuge Service (Lot 2)	Home Group Ltd	Prevention & Early Intervention	Business as usual	Sandy Jerrim	Karl Hooper	SCC	01/08/16	31/03/21	31/03/21	Block Contract	£127,000.00	quarterly	3 months

EC09/01/25 63	Comprehensive Counselling for children & Young People 5-25 Lot 1	No Limits (South)	Prevention & Early Intervention	20: Prevention and Early Help for Children and Families	Marie Woodhouse	Ireen Kagwa	SCC	01/09/18	30/09/22	30/09/22	Framework	£104,151.00	quarterly	3 months
CS06738	Domestic Abuse Perpetrator and Prevention Services	Hampshire County Council	Prevention & Early Intervention	Business as usual	Sandy Jerrim	Karl Hooper	SCC	01/04/19	31/03/24	31/03/26	Block Contract	£53,000.00	annually	6 Months
EC09/01/24 44	Level 3 Sexual Health Services	Solent NHS Trust	Prevention & Early Intervention	19: Sexual Health and Teenage Pregnancy	Tim Davis	Ireen Kagwa	SCC	01/04/17	31/03/22	31/03/22	Block Contract	£2,130,876.48	quarterly	12 months
SCC-SP-279	Family Support Services	Avenue Centre	Prevention & Early Intervention	20: Prevention and Early Help for Children and Families	Tim Davis	Merlyn Ganeshamoorthy	SCC	01/04/17	31/12/19	31/12/19	Block Contract	£17,250.00	quarterly	3 months
EC09/01/24 22	Placement of Children and Young People with Independent Fostering Agencies	Various	Prevention & Early Intervention	37: Independent foster care	Chris Pelletier	Karl Hooper	SCC	01/04/17	31/03/21	31/03/21	Framework	£16,000.00	quarterly	12 months
MW288	Independent Chair (LSAB)	Robert Templeton	Business as Usual	Business as usual	Sarah Lawrence	Merlyn Ganeshamoorthy	SCC	01/04/17	30/09/19	30/09/19	Block Contract	£16,500.00	N/A	N/A
EC09/01/24 54A	Housing Related Support Services for Adults: Lot 1 – Provision of a Combined Assessment, Intensive and Resettlement Housing Related Support Service in Southampton	Two Saints	Prevention & Early Intervention	21: Housing Related Support	Sandy Jerrim	Sadie Brackstone	SCC	01/07/17	30/06/21	30/06/22	Block Contract	£472,472.00	quarterly	3 months
EC09/01/24 54B	Housing Related Support Services for Adults: Lot 2 - Provision of an Intensive and Resettlement Housing Related Support Service in Southampton	Society of St James	Prevention & Early Intervention	21: Housing Related Support	Sandy Jerrim	Sadie Brackstone	SCC	01/07/17	30/06/21	30/06/22	Block Contract	£189,449.00	quarterly	3 months
EC09/01/24 54C	Housing Related Support Services for Adults: Lot 3 - Provision of an Intensive Lifeskills and Resettlement Housing Related Support Service in Southampton	Society of St James	Prevention & Early Intervention	21: Housing Related Support	Sandy Jerrim	Sadie Brackstone	SCC	01/07/17	30/06/21	30/06/22	Block Contract	£169,507.00	quarterly	3 months
EC09/01/24 54D	Housing Related Support Services for Adults: Lot 4 - Provision of an Intensive Lifeskills and Resettlement Housing Related Support Service in Southampton	Salvation Army	Prevention & Early Intervention	21: Housing Related Support	Sandy Jerrim	Sadie Brackstone	SCC	01/07/17	30/06/21	30/06/22	Block Contract	£288,578.16	quarterly	3 months
EC09/01/24 54/E	Housing Related Support Services for Adults: Lot 5 - Provision of Flexible Housing Related Support Service in Southampton	Home Group Ltd	Prevention & Early Intervention	21: Housing Related Support	Sandy Jerrim	Sadie Brackstone	SCC	01/07/17	30/06/21	30/06/22	Block Contract	£1,473,108.00	quarterly	3 months
EC09/01/24 54F	Housing Related Support Services for Adults: Lot 6 - Provision of an Accommodation Based Housing Support Service to People with Alcohol Related Housing and Support Needs	Society of St James	Prevention & Early Intervention	21: Housing Related Support	Sandy Jerrim	Sadie Brackstone	SCC	01/07/17	30/06/21	30/06/22	Block Contract	£126,640.80	quarterly	3 months
EC09/01/24 61A	Housing Related Support Services for Children and Young Persons: Lot 1 – Housing and Flexible Floating Support for Young People	YMCA Fairthorne Group	Prevention & Early Intervention	21: Housing Related Support	Sandy Jerrim	Sadie Brackstone	SCC	01/07/17	30/06/21	30/06/22	Block Contract	£275,301.00	quarterly	3 months
EC09/01/24 61B	Housing Related Support Services for Children and Young Persons: Lot 2 – Housing Support for Young People, Young Parents and a Flexible Floating Support Service	Two Saints	Prevention & Early Intervention	21: Housing Related Support	Sandy Jerrim	Sadie Brackstone	SCC	01/07/17	30/06/21	30/06/22	Block Contract	£337,480.00	quarterly	3 months
EC09/01/24 61C	Housing Related Support Services for Children and Young Persons Lot 3 – Hostel/Foyer Style Support for Young People	YMCA Fairthorne Group	Prevention & Early Intervention	21: Housing Related Support	Sandy Jerrim	Sadie Brackstone	SCC	01/07/17	30/06/21	30/06/22	Block Contract	£240,420.96	quarterly	3 months
EC09/01/24 61D	Housing Related Support Services for Children and Young Persons: Lot 4 – Supported Lodgings Service	Step By Step Partnership Limited	Prevention & Early Intervention	21: Housing Related Support	Sandy Jerrim	Sadie Brackstone	SCC	01/07/17	30/06/21	30/06/22	Block Contract	£88,420.80	quarterly	3 months
EC09/01/25 88	Way Ahead Leisure Pursuit Overnight Respite for Learning Difficulties	Weston Court	Business as Usual	Business as usual	Matthew Harrison	Ireen Kagwa	SCC	09/10/17	30/01/20	30/01/20	Block Contract	£222,000.00	quarterly	4 months
EC09/01/25 52	Advice, Information and Guidance	Southampton Citizens Advice Bureau	Prevention & Early Intervention	17: Community Solutions	Moraig Forrest-Charde	Karl Hooper	SCC	01/02/18	31/01/23	31/01/25	Block Contract	£612,691.00	quarterly	3 months
EC09/01/25 85	Carer's Support Services	Southampton Mencap	Prevention & Early Intervention	9: Transforming care for people with Learning Disabilities	Kirsten Killander	Karl Hooper	SCC	01/04/18	31/03/23	31/03/25	Block Contract	£353,115.00	quarterly	3 months
EC09/01/26 55	Safe Families For Children Services	Safe Families For Children	Prevention & Early Intervention	20: Prevention and Early Help for Children and Families	Phil Lovegrove	Katerina Ploumakis	SCC	01/04/18	31/03/21	31/03/23	Block Contract	£60,000.00	quarterly	3 months
EC09/01/26 08	Living Well Service	SCA Group	Commissioning Safe & High Quality Services	29: Home care implementation	Adrian Littlemore	Karl Hooper	SCC	14/02/18	31/03/23	31/03/25	Block Contract	£600,000.00	quarterly	12 months

EC09/01/26 40	Monitoring and management of the Community Equipment Service	Promoting Independence in People Ltd	Integration	2: Supporting appropriate timely discharge & out of hospital model	Jamie Schofield	Katerina Ploumakis	SCC	01/04/17	30/06/20	30/06/20	Purchase Order	£41,124.00	monthly	3 months
60043635	Rehabilitation and Reablement Beds	Northover Group	Business as Usual	31: Nursing home and complex residential care market capacity	Jamie Schofield	Karl Hooper	SCC	01/04/19	31/03/22	31/03/25	Purchase Order	£105,289.32	N/A	3 months
MW295	Well and Working Southampton	Economic Development Team (SCC)	Business as Usual	Business as usual	Ravita Taheem	Sadie Brackstone	SCC	01/04/18	31/10/20	31/10/20	SLA	£12,000.00	quarterly	2 months
MW296	Trusted Professionals	University Hospital Southampton NHS Foundation Trust	Business as Usual	Business as usual	Sharon Stewart	Sadie Brackstone	SCC	22/05/18	N/A	N/A	Block Contract	£0.00	on demand	N/A
EC09/01/24 13A	HIV Self Sampling Testing	PreventX	Prevention & Early Intervention	20: Prevention and Early Help for Children and Families	Phil Lovegrove	Ireen Kagwa	SCC	30/10/17	30/10/19	30/10/19	Framework	£8,500.00	N/A	3 months
EC09/01/24 22	Children's Residential Placements – Consortia Commissioning	Children's Residential Care Framework	Prevention & Early Intervention	32: Children's residential care	Chris Pelletier	Karl Hooper	SCC	01/10/18	31/03/22	31/03/22	Framework	£6,000.00	quarterly	12 months
SCC-CR-833	Breastfeeding Support Service	National Childbirth Trust	Prevention & Early Intervention	Business as usual	Tim Davis	Katerina Ploumakis	SCC	01/04/19	31/03/21	31/03/22	Block Contract	£49,072.00	quarterly	1 month
EC09/01/27 16	Independent visitor and Advocacy	National Youth Advocacy Service	Prevention & Early Intervention	Business as usual	Tim Davis	Katerina Ploumakis	SCC	01/04/19	31/03/22	31/03/24	Block Contract	£64,947.00	quarterly	1 month
SCC-CR-785	Direct Payment Support Service	SPECTRUM Centre for Independent Living	Business as Usual	Business as usual	Sandy Jerrim	Merlyn Ganesamoorthy	SCC	01/10/18	30/09/19	31/03/20	Purchase Order	£38,254.50	quarterly	1 month
MW302	Tier 2 Adult Weight Management	WW GBR Ltd	Prevention & Early Intervention	15: Behaviour Change	Georgina Cunningham	Sadie Brackstone	SCC	01/04/19	30/09/20	30/09/20	Block Contract	£64,800.00	Quarterly	3 months
MW304	Tier 2 Adult Weight Management in Pregnancy	Slimming World Limited	Prevention & Early Intervention	15: Behaviour Change	Georgina Cunningham	Sadie Brackstone	SCC	01/05/19	30/09/20	30/09/20	Block Contract	£9,000.00	quarterly	3 months
EC09/01/27 22B	Lot 2 Alcohol Drugs and Substance Misuse Services	No Limits (South)	Prevention & Early Intervention	16: Alcohol	Jackie Hall	Katerina Ploumakis	SCC	01/07/19	30/06/24	30/06/26	Block Contract	£482,497.00	quarterly	6 months
EC09/01/27 22A	Lot 1 Alcohol Drugs and Substance Misuse Services	change, grow, live (CGL)	Prevention & Early Intervention	16: Alcohol	Jackie Hall	Katerina Ploumakis	SCC	01/07/19	30/06/24	30/06/26	Block Contract	£2,228,770.00	quarterly	6 months
EC09/01/26 49	Post 16 Accommodation & Support – Consortia Commissioning	Fairways	Prevention & Early Intervention	32: Children's residential care	Jackie Hall	Karl Hooper	SCC	01/02/19	31/03/23	31/03/23	Framework	£0.00	quarterly	6 Months
EC09/01/08 99 B1,2	LD LTA Day Care Services (3 Units)	Dimensions (UK) Ltd	Integration	9: Transforming care for people with Learning Disabilities	Kate Dench	Karl Hooper	SCC	01/12/03	31/10/18	31/10/18	Framework	£0.00	N/A	12 months
EC09/01/08 99 A1,2	LD LTA Residential Care (3 Units)	Dimensions (UK) Ltd	Integration	9: Transforming care for people with Learning Disabilities	Kate Dench	Karl Hooper	SCC	01/12/03	31/10/18	31/10/18	Framework	£0.00	N/A	12 months
TBC	Peer Support Service	Solent Mind	Prevention & Early Intervention	Business as usual	Jackie Hall	Karl Hooper	SCC	01/04/19	31/03/20	31/03/20	Block Contract	£39,400.00	N/A	3 months
N/A	Smoking Cessation in Community Pharmacies (LCS)	Boots UK Limited	Prevention & Early Intervention	15: Behaviour Change	Charlotte Matthews	Sadie Brackstone	SCC	15/04/19	31/03/20	31/03/21	LCS	£0.00		0 3 months
EC09/01/27 09	Short Break Services	Various (see Frameworks tab)	Business as Usual	11: Improving the outcomes for children with SEND	Sandy Jerrim	Merlyn Ganesamoorthy	SCC	01/04/19	31/03/21	31/03/23	Framework	£898,594.00	Quarterly	6 months
EC09/01/24 86C	Homeless Vulnerable Adult Support team Navigation Service	Two Saints	Business as Usual	Business as usual	Sandy Jerrim	Katerina Ploumakis	SCC	01/07/19	30/06/20	30/06/21	Block Contract	£267,548.00	quarterly	3 months
EC09/01/26 35	Home Care Services	Various (see Frameworks tab)	Business as Usual	Business as usual	Moraig Forrest-Charde	Sadie Brackstone	SCC	01/04/19	31/03/23	31/03/25	Framework	£0.00	quarterly	6 months

N/A	Smoking Cessation in Community Pharmacies (LCS)	Lloyds Pharmacy	Prevention & Early Intervention	15: Behaviour Change	Charlotte Matthews	Sadie Brackstone	SCC	15/04/19	31/03/20	31/03/21	LCS	£0.00	0	3 months
EC09/01/28 46B	Supported Lettings for People Experiencing Homelessness	Society of St James	Prevention & Early Intervention	21: Housing Related Support	Sandy Jerrim	Katerina Ploumakis	SCC	22/07/19	21/07/20	21/07/22	Block Contract	£119,500.00	quarterly	3 months
EC09/01/28 46D	Somewhere Safe To Stay For People Experiencing Homelessness	The Salvation Army	Prevention & Early Intervention	Business as usual	Sandy Jerrim	Katerina Ploumakis	SCC	27/08/19	26/08/20	26/08/22	Block Contract	£191,990.00	quarterly	3 months
EC09/01/28 69	Southampton Safeguarding Children Partnership	SCC, SCCC, Hampshire Constabulary	Business as Usual	Business as usual	Sarah Lawrence	Merlyn Ganesamoorthy	SCC	29/09/19	28/09/23	28/09/25	Block Contract	£159,115.00	N/A	6 months
N/A	Brain in Hand	Brain in Hand	Managing & Developing the Market	5: Adult mental health	Sandy Jerrim	Merlyn Ganesamoorthy	SCC	01/04/19	31/03/20	31/03/20	Purchase Order	£11,650.00	0	N/A
N/A	Smoking Cessation in Community Pharmacies (LCS)	Superdrug Pharmacy Woolston	Prevention & Early Intervention	15: Behaviour Change	Charlotte Matthews	Sadie Brackstone	SCC	17/09/19	31/03/20	31/03/21	LCS	£0.00	0	3 months
N/A	Needle Syringe Program	9 Pharmacies	Prevention & Early Intervention	15: Behaviour Change	Charlotte Matthews	Katerina Ploumakis	SCC	01/07/19	30/09/20	30/09/20	LCS	£8,400.00	0	3 months
N/A	Supervised Consumption	15 Pharmacies	Prevention & Early Intervention	15: Behaviour Change	Charlotte Matthews	Katerina Ploumakis	SCC	01/07/19	30/09/20	30/09/20	LCS	£110,000.00	0	3 months
N/A	Shared Care	7 GP practices	Prevention & Early Intervention	15: Behaviour Change	Charlotte Matthews	Katerina Ploumakis	SCC	01/07/19	30/09/20	01/10/20	LCS	£50,000.00	0	3 months
EC09/01/26 79	Residential Recovery and Rehabilitation for People with Enduring MH	Home Group Ltd	Integration	5: Adult mental health	Alison Boynton	Merlyn Ganesamoorthy	SCC	01/09/19	31/08/22	31/08/23	Block Contract	£415,000.00	quarterly	6 months

Contract Reference EC/MW	Contract Title	Service Provider	ICU Programme	ICU Project	Commissioning Lead	Contracts Lead	Contracting Organisation (SCC or CCG)	Contract Start Date	Current Contract Expiry Date	Maximum Expiry Date	Agreement Type	Total Annual value 2019/20	Monitoring Frequency	Contract Notice Period for termination
EC09/01/2423B	Long Acting Reversible Contraception- Supporting Intra Uterine System in Women for Dual Gynaecology and Non-Contraception Indicators (S256)	Southampton City Council	Prevention & Early Intervention	19: Sexual Health and Teenage Pregnancy	Phil Lovegrove	Ireen Kagwa	SCCCG	01/04/19	31/03/22	31/03/22	S256	£14,000.00	monthly	3months
EC09/01/1484(f)	Looked After Children Service (s76)	Southampton City Clinical Commissioning Group	Business as Usual	Business as usual	Katherine Elsmore	Ireen Kagwa	SCC	01/04/08	31/03/20	31/03/20	S76	£41,655.00	Quarterly	3 months
EC09/01/1684	Building Resilience and Strengths (formerly Behaviour Resource Services) (s76)	Southampton City Clinical Commissioning Group	Prevention & Early Intervention	20: Prevention and Early Help for Children and Families	Phil Lovegrove	Merlyn Ganeshamoorthy	SCC	01/04/09	30/09/20	30/09/20	s76	£490,000.00	quarterly	6 months
EC09/01/1684a	Building Resilience and Strengths (formerly Behaviour Resource Services) (s256)	Southampton City Clinical Commissioning Group	Prevention & Early Intervention	20: Prevention and Early Help for Children and Families	Phil Lovegrove	Merlyn Ganeshamoorthy	SCCCG	01/04/09	30/09/20	30/09/20	s256	£490,000.00	quarterly	6 months
EC09/01/1874	Child and Adolescent Mental Health Services (CAMHS) (s76)	Southampton City Clinical Commissioning Group	Integration	6: CAMHS Transformation	Phil Lovegrove	Merlyn Ganeshamoorthy	SCC	01/04/11	31/03/20	31/03/20	s76	£165,898.00	quarterly	6 months
EC09/01/2086	Public Health Services (s75)	Southampton City Clinical Commissioning Group	Prevention & Early Intervention	Business as usual	Jason Horsley	Katerina Ploumakis	SCC	01/04/13	N/A	N/A	s75	£842,955.00	quarterly	12 months
EC09/01/1987A	Joint Equipment Service (s75)	Southampton City Clinical Commissioning Group	Integration	2: Supporting appropriate timely discharge & out of hospital model	Jamie Schofield	Katerina Ploumakis	SCC	01/07/13	30/06/20	30/06/20	s75	£1,614,000.00	annually	6 months
EC09/01/2538	Mental Health Integration (s75)	Southern Health NHS Foundation Trust	Integration	5: Adult mental health	Amanda Luker	Aleksandra Burlinson	SCC	01/04/19	31/03/22	31/03/22	s75	£301,770.00	quarterly	12 months
MW252	Mental Health Advocacy Service (s256)	Southampton City Clinical Commissioning Group	Integration	5: Adult mental health	Colin McAllister	Sadie Brackstone	SCC	01/04/15	31/03/20	31/03/20	s256	£13,982.96	N/A	9 months
EC09/01/0989	Northlands House - Residential Nursing Care (s75)	Southampton City Clinical Commissioning Group	Managing & Developing the Market	Business as usual	Matthew Waters	Ireen Kagwa	SCC	24/06/05	23/06/30	23/06/30	s75	£2,345,780.71	quarterly	N/A
EC09/01/1101	Oak Lodge - Residential Nursing Care (s75)	Southampton City Clinical Commissioning Group	Managing & Developing the Market	Business as usual	Matthew Waters	Ireen Kagwa	SCC	08/02/10	07/02/30	07/02/30	s75	£1,515,158.58	quarterly	N/A
EC09/01/2267	Better Care Fund (BCF) - Functions related to Health and Social Care Services (s75)	Southampton City Clinical Commissioning Group	Integration	Business as usual	Donna Chapman	Sadie Brackstone	SCC	01/04/15	N/A	N/A	s75	£115.693m	quarterly	3 months
MW271	Child Death Overview Panel Administrator (S76)	Southampton City Clinical Commissioning Group	Business as Usual	Business as usual	Katherine Elsmore	Ireen Kagwa	SCC	01/11/15	30/09/19	30/09/19	s76	£11,475.00	quarterly	3 months
EC09/01/2377	Locally Based Hospital Unit Reprovision (LBHU) (s75)	Southampton City Clinical Commissioning Group	Integration	8: Learning Disabilities (LD Integration)	Kate Dench	Merlyn Ganeshamoorthy	SCC	01/04/15	N/A	N/A	s75	£2,600,000.00	quarterly	N/A
EC09/01/2376b	Reablement and Rehabilitation service (S75)	Southampton City Clinical Commissioning Group	Business as Usual	Business as usual	Jamie Schofield	Ireen Kagwa	SCC	01/04/16	01/04/20	01/04/20	S75	BCF	quarterly	4 months
EC09/01/2376a	Integrated Provision of Health and Social Care Services	Solent NHS Trust	Business as Usual	Business as usual	Jamie Schofield	Ireen Kagwa	SCC	01/04/16	01/04/20	01/04/20	s75	N/A	quarterly	12 months
N/A	0-19 Integrated Provision (S75)	Solent NHS Trust	Prevention & Early Intervention	20: Prevention and Early Help for Children and Families	Donna Chapman	Sadie Brackstone	SCC	01/04/18	31/03/23	31/03/25	s75	£5,276,356.00	quarterly	12 months
MW301	Community Navigation - Adults Mental Health (S76)	Southampton City Clinical Commissioning Group	Prevention & Early Intervention	5: Adult mental health	Amanda Luker	Ireen Kagwa	SCC	01/12/18	30/09/19	30/09/19	S76	£22,500.00	N/A	N/A
EC09/01/2624	Comprehensive Counselling for children & Young People 5-25 Years of Age (S256)	Southampton City Clinical Commissioning Group	Prevention & Early Intervention	20: Prevention and Early Help for Children and Families	Marie Woodhouse	Ireen Kagwa	SCCCG	01/09/18	30/09/22	30/09/22	s256	£65,000.00	quarterly	3 months
EC09/01/2813												£56,165.00	N/A	6 months
EC09/01/2679A	Residential Recovery and Rehabilitation for People with Enduring MH (s75)	Southampton City Clinical Commissioning Group	Integration	5: Adult mental health	Alison Boynton	Merlyn Ganeshamoorthy	SCC	01/09/19	31/08/22	31/08/23	s75	£415,000.00	annually	12 months
EC09/01/2893	S76 Homeless Healthcare	Southampton Clinical Commissioning Group	Integration	Business as usual	Sandy Jerrim	Katerina Ploumakis	SCC	01/09/19	31/08/20	31/08/20	S76	£20 000	N/A	2 months